

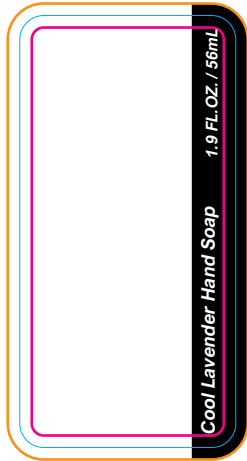
Scented Hand Soap Label Template, Rev 0

1 oz Oval

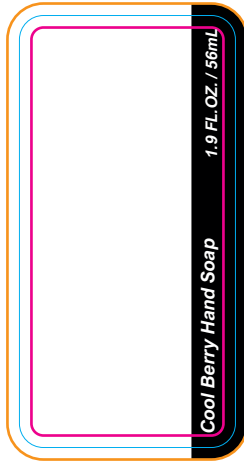
Active from May 14, 2021

- BLEED LINE
- DIE LINE
- SAFE LINE

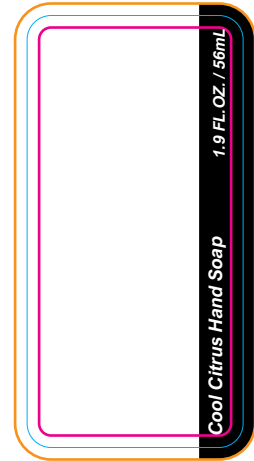
9F085LP



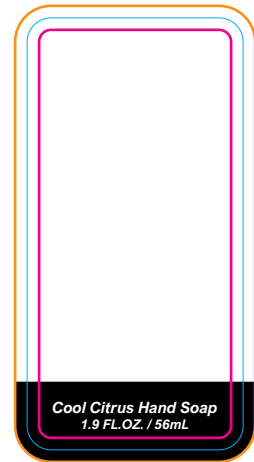
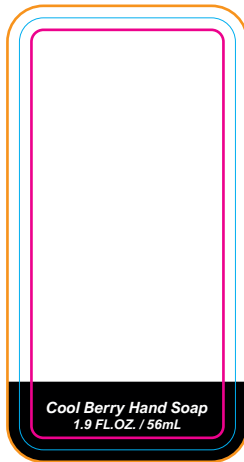
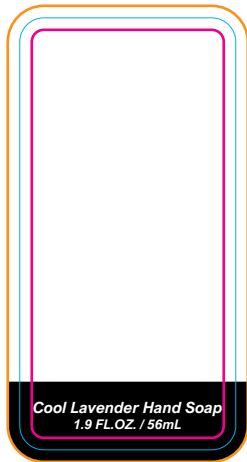
9F085BB



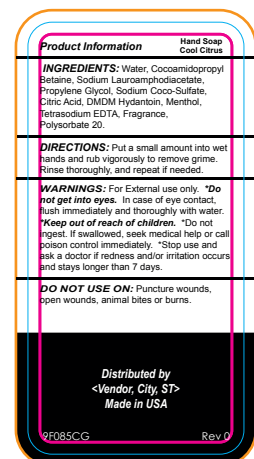
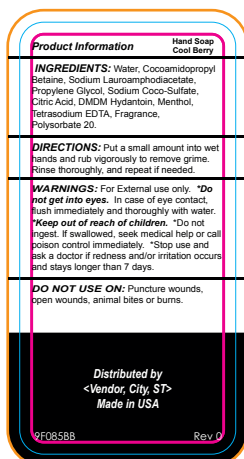
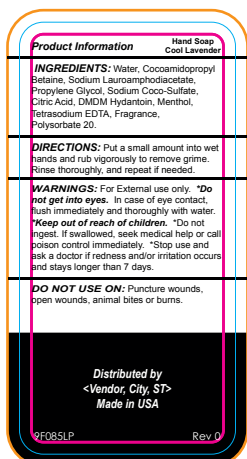
9F085CG



Imprintable Area
0.83" x 2.125"



Imprintable Area
1.0" x 1.83"



Product Information Hand Soap
Cool Lavender

INGREDIENTS: Water, Cocoamidopropyl Betaine, Sodium Lauroamphodiacetate, Propylene Glycol, Sodium Coco-Sulfate, Citric Acid, DMDM Hydantoin, Menthol, Tetrasodium EDTA, Fragrance, Polysorbate 20.

DIRECTIONS: Put a small amount into wet hands and rub vigorously to remove grime. Rinse thoroughly, and repeat if needed.

WARNINGS: For External use only. **Do not get into eyes.** In case of eye contact, flush immediately and thoroughly with water.

Keep out of reach of children. "Do not ingest. If swallowed, seek medical help or call poison control immediately." "Stop use and ask a doctor if redness and/or irritation occurs and stays longer than 7 days.

DO NOT USE ON: Puncture wounds, open wounds, animal bites or burns.

Distributed by
<Vendor, City, ST>
Made in USA

9F085LP

Rev 0

Product Information Hand Soap
Cool Berry

INGREDIENTS: Water, Cocoamidopropyl Betaine, Sodium Lauroamphodiacetate, Propylene Glycol, Sodium Coco-Sulfate, Citric Acid, DMDM Hydantoin, Menthol, Tetrasodium EDTA, Fragrance, Polysorbate 20.

DIRECTIONS: Put a small amount into wet hands and rub vigorously to remove grime. Rinse thoroughly, and repeat if needed.

WARNINGS: For External use only. **Do not get into eyes.** In case of eye contact, flush immediately and thoroughly with water.

Keep out of reach of children. "Do not ingest. If swallowed, seek medical help or call poison control immediately." "Stop use and ask a doctor if redness and/or irritation occurs and stays longer than 7 days.

DO NOT USE ON: Puncture wounds, open wounds, animal bites or burns.

Distributed by
<Vendor, City, ST>
Made in USA

9F085BB

Rev 0

Product Information Hand Soap
Cool Citrus

INGREDIENTS: Water, Cocoamidopropyl Betaine, Sodium Lauroamphodiacetate, Propylene Glycol, Sodium Coco-Sulfate, Citric Acid, DMDM Hydantoin, Menthol, Tetrasodium EDTA, Fragrance, Polysorbate 20.

DIRECTIONS: Put a small amount into wet hands and rub vigorously to remove grime. Rinse thoroughly, and repeat if needed.

WARNINGS: For External use only. **Do not get into eyes.** In case of eye contact, flush immediately and thoroughly with water.

Keep out of reach of children. "Do not ingest. If swallowed, seek medical help or call poison control immediately." "Stop use and ask a doctor if redness and/or irritation occurs and stays longer than 7 days.

DO NOT USE ON: Puncture wounds, open wounds, animal bites or burns.

Distributed by
<Vendor, City, ST>
Made in USA

9F085CG

Rev 0